



Release Notes 22.1

**IDL Konsis, Forecast,
Xlslink**

1 Contents

2	General Notes	5
2.1	About this Release	5
2.2	Data Backup	5
2.3	Migration	5
2.4	Documentation	5
2.5	Security	6
2.6	Technical Information	6
2.7	Other Notes	6
3	IDL Konsis	7
3.1	User interface.....	7
3.2	Menu authorizations.....	7
3.3	Company financial statement	7
3.3.1	Controlling balances (CNTSAL)/ IC balances (ICKTOSAL)/ IC stocks (ICVOR)	7
3.3.2	Identifier for transferred IC balances	7
3.3.3	Merger of individual financial statements data (MERGES)	7
3.4	Consolidated financial statements	8
3.4.1	Elimination Fixed Asset result (TA)	8
3.5	Reporting	8
3.5.1	Report result (REPERGxxx)	8
3.6	Extras	8
3.6.1	Automate control.....	8
3.6.2	Aggregation subgroup to a company financial statements (KTK2GES)	8
3.7	Interfaces	9
3.7.1	Extension of the MIS parameter application	9
3.7.2	Extension of the Datamart.....	9
4	IDL Forecast.....	10
4.1	User interface.....	10

4.1.1	Latest insightsoftware design	10
4.2	Planning	10
4.2.1	Adjustments for MDK Analysis	10
4.2.2	Follow up applications	10
4.3	Documentation	10
4.3.1	Online-Docu	10
5	IDL XIslink	11
5.1	User Interface	11
5.1.1	Latest insightsoftware design	11
5.1.2	Main Application – Settings Dialog	11
5.1.3	Options for export to text files persistent	12
5.2	Performance und Stability.....	12
5.2.1	Instantaneous installation of the XIslink AddIn in Excel	12
5.2.2	Caching of master data in Excel optimized.....	12
5.3	Alternative IDL XIslink AddIn Installation	13
5.4	Windows 11 and Office 2021	14
5.5	Formula-editor Updates.....	14
5.5.1	New master data read function “company + business unit allocations” (STUBR) .	14
5.5.2	(C)redit / (D)ebit instead of (S)oll / (H)aben in international contexts	15
5.5.3	Operator prefix in Excel Cell.reference / Range-reference	16
5.5.4	Unicode Support for read and export functions.....	16
5.5.5	Mandatory fields.....	16
5.6	IDL XIslink 22.0 Preview for customers using IDL Connector in version 2019.1	16
6	IDL Smart Connectivity for SAP	17
6.1	IDL.Integrator.SSIS.exe	17
6.1.1	64 Bit IDL.Integrator.SSIS.exe	17
6.2	Deployment	17
6.2.1	Deserialisation error using Visual Studio / SQL Server 2019	17



2 General Notes

2.1 About this Release

This documentation describes the changes in IDL Konsis, IDL Forecast, IDL Xlslink and IDL Smart Connectivity for SAP compared to Release 2022.0. The minimum requirement for installing this version is the installation of Release 2022.0.

The previously released fixpacks are included.

With this release, maintenance for the 2022.0 release ends.

2.2 Data Backup

Before installation, please make a backup of your database(s) and check it to protect against data loss.

2.3 Migration

After installation, the release migration for IDL Konsis / IDL Forecast must always be performed first. After logging in, start the release migration via <Start migration now> in the message window. A restart is not necessary, all applications are available afterwards.

You can find the protocol of the migration under the short word KONVERT (right-click on the corresponding migration).

If the migration is not started in this manner, e.g., because the logged-in user lacks authorization, the call of other applications is blocked. The only exceptions are the applications for maintaining the authorization data if the logged-in user does not have authorization to execute the migration due to the use of individual authorization groups. After manual execution of the migration, IDL Konsis / IDL Forecast must be restarted.

2.4 Documentation

In the subdirectory Doku\Release you will find the following documentations

- Technical Installation Instructions
- Operational Installation Instructions
- Release Notes

For the currently valid "Hard- and Software Requirements", please refer to the Customer Portal

<https://help.insightsoftware.com/s/article/IDL-Hard-and-Software-Requirements> (login required).

2.5 Security

TLS 1.3 is used as the communication protocol between the client and the application server. Perfect Forward Secrecy makes it much more difficult to decrypt the connection at a later date.

External libraries have been updated. This also applies, for example, to the security vulnerability in the Log4J library that occurred in December 2021.

2.6 Technical Information

The Desktop Client and the IDL Launcher deliver the used JRE (Java Runtime Environment) in the installation directory, so that no separate installation is necessary.

Java 17 has been used since release 22.1.

2.7 Other Notes

The functions of IDL Connector have not been further developed since the 2016 release. Since the 2020.0 release, the new versions only ensure technical runnability. Runnable Excel sheets can still be used depending on the Excel versions available at that time, but IDL offers only limited support for them. This release is the last time a version of the Connector will be shipped within the installation package. As of the upcoming release 22.3, the Connector will no longer be part of the installation package.

For alternatives to IDL Connector, please contact your consultant or sales contact.

With the current release, the user interface has been adapted to the latest design of insightsoftware. Product and company names have been updated.

3 IDL Konsis

3.1 User interface

We have updated our user interface to match the latest insightsoftware design. This includes the IDL Konsis application icon in your task bar, the splashscreen which is shown during the startup and various color schemes and icons in the client itself.

3.2 Menu authorizations

The following menu items have been deactivated with this release. They will be deleted in a subsequent release. Until then, please remove all individual uses (authorizations, menu structures) of these menu items:

- POS (Positions)
- POSE (single set of positions)

3.3 Company financial statement

3.3.1 Controlling balances (CNTSAL)/ IC balances (ICKTOSAL)/ IC stocks (ICVOR)

It is no longer possible to copy balances into a period in which the respective account is no longer valid.

3.3.2 Identifier for transferred IC balances

When IC main account balances were re-generated to IC sub-account balances while transfer to a new fact, the IC sub-account balances that may have already been manually entered there, were deleted, so that they had to be entered again. Now transferred IC sub-account balances receive a specific identifier, so that only these are deleted when they are re-generated again. IC balances that have already been entered manually remain in place.

3.3.3 Merger of individual financial statements data (MERGES)

If 'Merger of the transaction developments' (MERGESAB) was carried out for a company with a 'Currency rate average per month'- transaction development, the error message occurred that merge posting keys are missed even though you are not allowed to create those posting keys for this special transaction development. Now the transaction developments of this special transaction development will not be processed, but remain standing, so that the error message no longer occurs.

3.4 Consolidated financial statements

3.4.1 Elimination Fixed Asset result (TA)

The processing 'elimination Fixed Assets result' (TA) has been extended by the possibility of 'gross posting' in the income statement. This means it is possible to post the sales value on the one hand and the book value disposal on the other hand 'gross' in the income statement. For this purpose, an additional field has been added for the entry of an account for the 'book value disposal' in the IC fixed asset object and additionally in the consolidation parameter 'TA'.

Basically, the following applies:

- An entry in the IC fixed asset object has priority over an entry in the consolidation parameter 'TA'.
- If an IC account for book value is entered in the disposal IC fixed asset object, an IC account for income must also be entered.

3.5 Reporting

3.5.1 Report result (REPERGxxx)

If only IC account balances were kept on data types and no account balances, the report aborted with an error message that IC balances were kept **without** account balances. Now this error no longer occurs, this applies to both the Group and the Company Report.

3.6 Extras

3.6.1 Automate control

If a certain development transaction was created in the automat for automatic locking or unlocking, all existing development transactions were locked or unlocked when the automate runs. Now the entry for the transaction development field is evaluated and individual transaction developments can be locked or unlocked. This applies to the other transaction developments, capital-, provisions- and shareholding transaction.

3.6.2 Aggregation subgroup to a company financial statements (KTK2GES)

When transmitting transaction developments through KTK2GES, the end of the month was always set as the transaction date, even if no aggregation took place. The transaction date is now retained if there is no consolidation for an account / posting key. As soon as there are the same constellations for several companies or consolidation bookings exist, a consolidation continues to take place and a uniform transaction date at the end of the month is still used.

3.7 Interfaces

3.7.1 Extension of the MIS parameter application

In the application for defining the MIS parameters (MISPAR), five instead of three languages can now be selected for version 04.

In the application for defining the MIS parameters (MISPAR), German, English and French had to be specified as the first three languages for the data provision in the Datamart even before version 04. Now the application ensures that the correct languages are specified.

3.7.2 Extension of the Datamart

The Datamart now provides data for up to five languages.

The Datamart provides additional columns with controlling dimensions.

4 IDL Forecast

4.1 User interface

4.1.1 Latest insightsoftware design

We have updated our user interface to match the latest insightsoftware design. This includes the IDL Konsis application icon in your task bar, the splashscreen which is shown during the startup and various color schemes and icons in the client itself.

4.2 Planning

4.2.1 Adjustments for MDK Analysis

Customers who are taking advantage of the new monthly average currency conversion rate (MDK analysis) in IDL Konsis can now apply the monthly average currency conversion rate to movements in controlling objects generated by IDL Forecast. This enables direct comparisons to be made between forecast and actual values.

4.2.2 Follow up applications

In the context menu of the planning form, the link to the no longer existing follow-up application "POS" has been removed.

4.3 Documentation

4.3.1 Online-Docu

The documentation that can be called up from IDL Forecast has been updated, in particular for the planning monitor, planning process as well as rule parameters and planning logs.

5 IDL Xlslink

5.1 User Interface

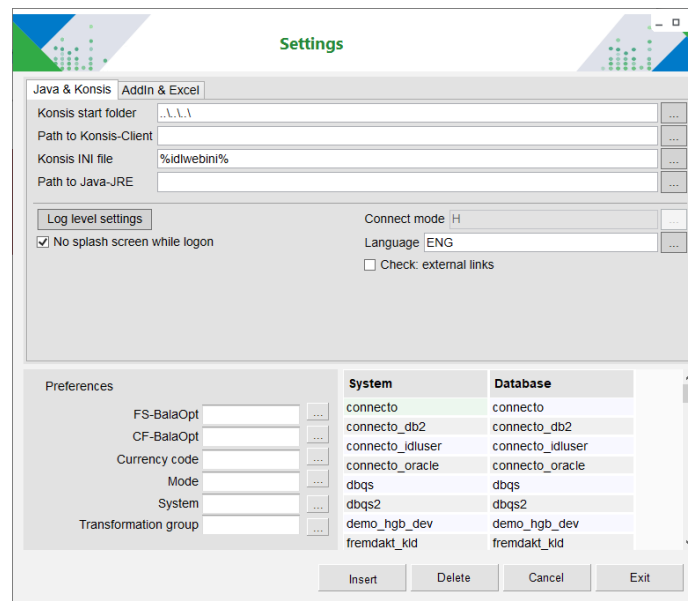
5.1.1 Latest insightsoftware design

We have updated our user interface to match the latest insightsoftware design. This includes the application icon in your task bar, the splashscreen which is shown during the startup and various color schemes and icons in the client itself.



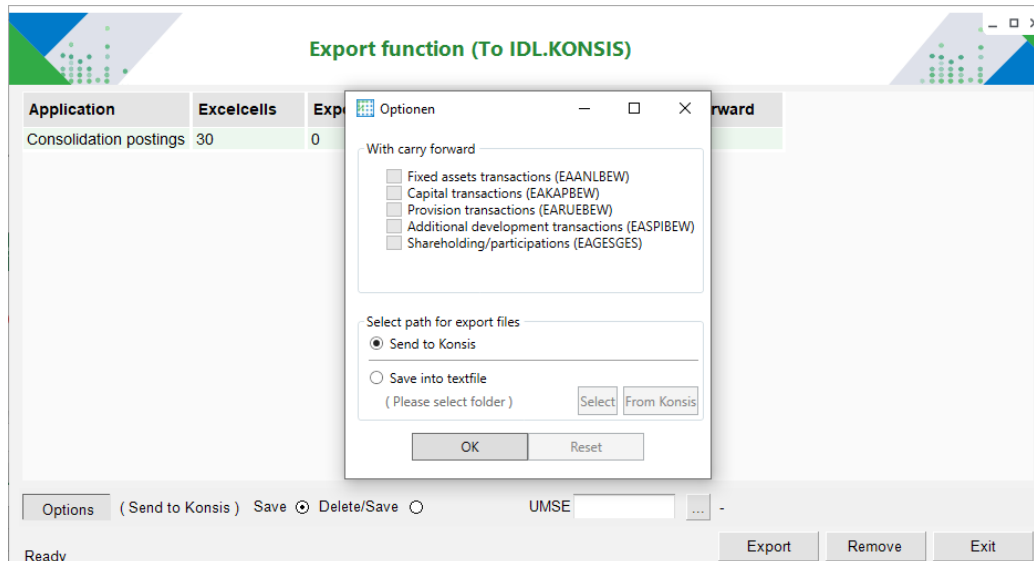
5.1.2 Main Application – Settings Dialog

The settings dialog has been revised and now offers a more structured design as well as the new option for displaying the IDL Xlslink Addin as a ribbon or as a conventional Addin menu in Excel. The "Path to Java JRE" path will now be determined relatively to the directory of the IDL.XlsLink.exe - and is thus deterministic and no longer dependent on the directory the main application has been started from.



5.1.3 Options for export to text files persistent

Changes for exporting to a text file are now also saved for all subsequent export processes and do not have to be set again for each subsequent export. These changes are retained even after restarting Excel & the main application.



5.2 Performance und Stability

This release includes bug fixes and performance improvements, which have a positive effect on the performance when using the Xlslink.

5.2.1 Instantaneous installation of the Xlslink AddIn in Excel

To install the IDL Xlslink AddIn in Excel, the automatic start of Microsoft Excel is no longer necessary. The installation routines are now controlled by the main application. Thus, installing / removing the Xlslink AddIn is now instantaneous. Previously, this process took about 1 minute depending on the user PC.

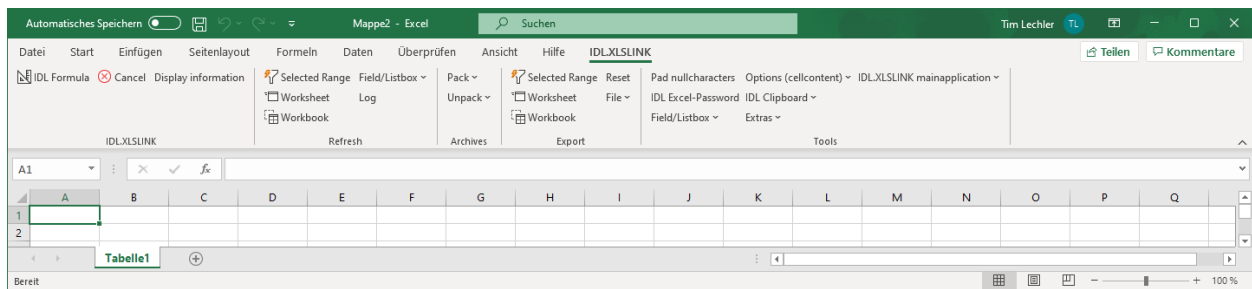
5.2.2 Caching of master data in Excel optimized

A more intelligent caching of master data within Excel files results in faster opening of such files by 16% on average. These caches are managed automatically by Xlslink.

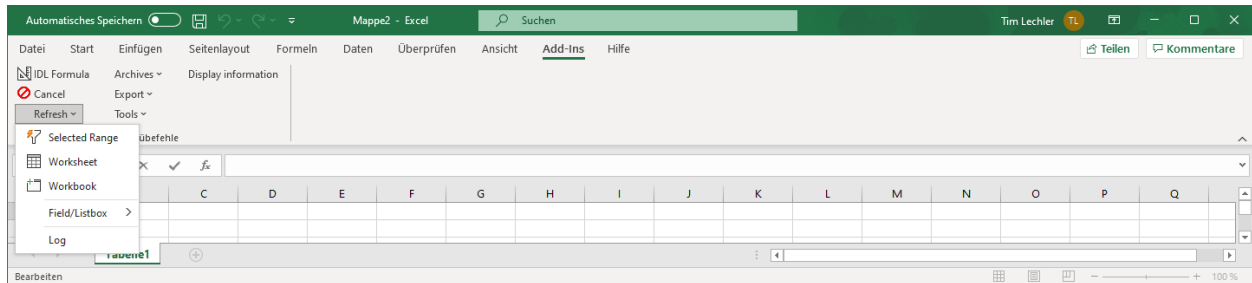
5.3 Alternative IDL Xlslink AddIn Installation

For customers whose Windows environment restricts the use of COM add-ins in Excel due to corporate group policies, we now offer the option to install the IDL Xlslink AddIn in Excel without COM add-ins. Without the COM-AddIn, the IDL Xlslink AddIn does not appear in the ribbon menu, but in the plain Excel program menu under the item "Add-Ins". All functions are still available via the "Add-Ins" menu.

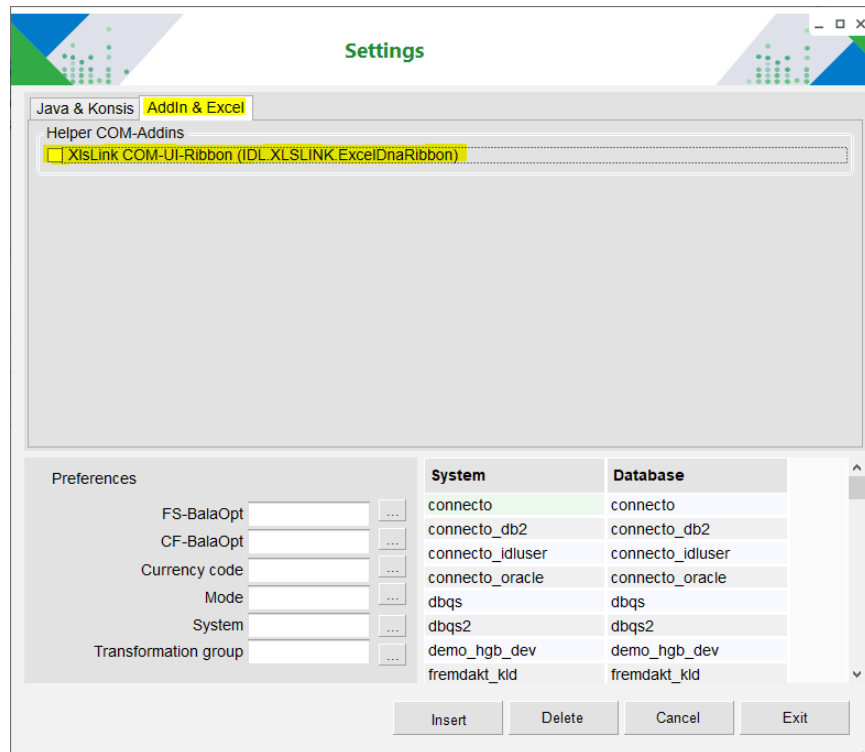
With COM-AddIn as Ribbon Menu



Without COM-AddIn as plain Excel Menu



The option to use of COM addins can be set in the main application in the "Settings" - "Application" area in the "Addin & Excel" tab with the "Xlslink COM-UI Ribbon (IDL.XLSLINK.ExcelDnaRibbon)" checkbox.



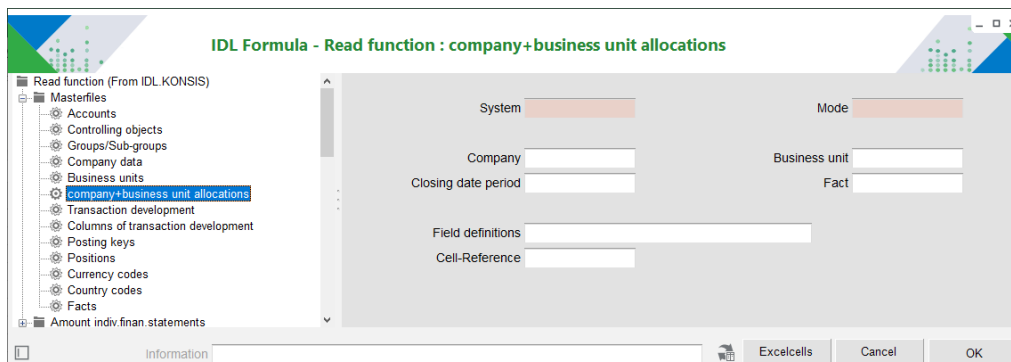
5.4 Windows 11 and Office 2021

We have tested IDL Xislink with the now available Microsoft operating system Windows 11 and Office 2021 Version and therefore approve IDL Xislink for Windows 11 and Office 2021.

5.5 Formula-editor Updates

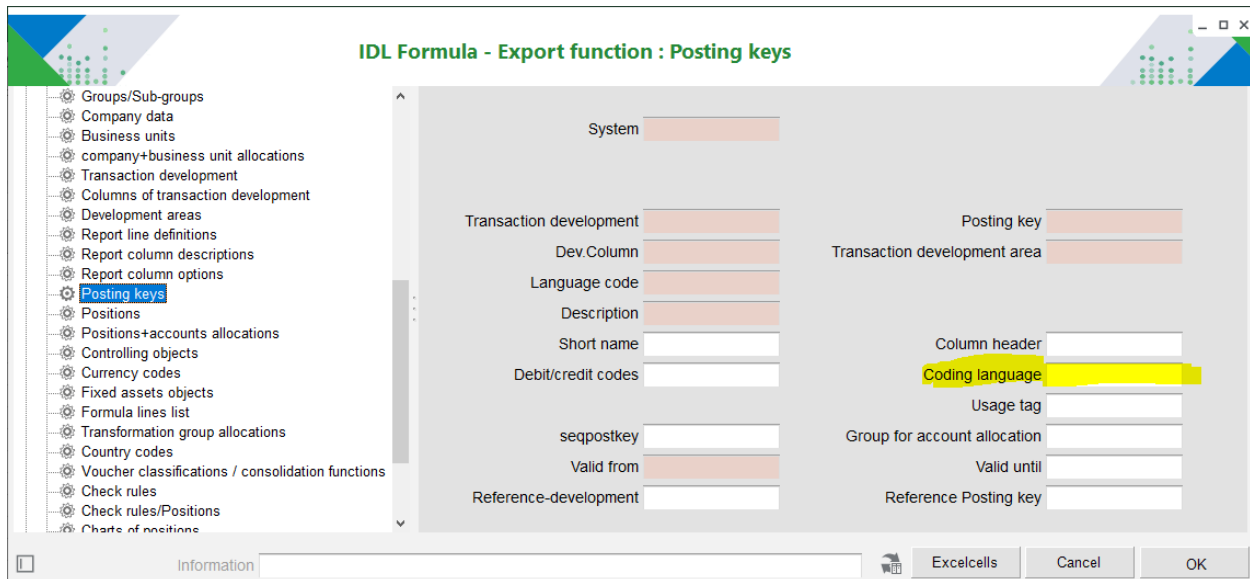
5.5.1 New master data read function “company + business unit allocations” (STUBR)

This read function was newly implemented in Xislink at the request customers.



5.5.2 (C)redit / (D)ebit instead of (S)oll / (H)aben in international contexts

The debit/credit indicators can now be used with C (Credit) and D (Debit) instead of the internal representation S and H. The translation can be activated by an entry in the "Coding language" field newly created for this purpose. Export function Posting Keys is shown as an example below.



This is also now available in the following export functions :

- Export Masterfiles
 - Positions + accounts allocations
 - Posting keys
- Export Amount individual financial statements
 - Postings
 - Provision transactions
 - Fixed asset transactions
 - Capital transactions
 - Shareholding/participations
 - Additional development transactions
 - IC-account balances
 - Controlling balances
 - Account balances
- Export Amount consolidated financial statements
 - Consolidation postings

5.5.3 Operator prefix in Excel Cell.reference / Range-reference

Occasionally customers have entered an operator such as „+“ as a prefix for cell / range references in their IDL formulas. This was not previously supported by the formula editor and can now be used in the formula editor.

5.5.4 Unicode Support for read and export functions

We have fixed gaps in support for special characters in cell contents in read and export functions. So all functions now support unicode.

5.5.5 Mandatory fields

- The „Fixed asset“ field is now no longer mandatory in the „Fixed asset transactions“ read functions for both individual and consolidated financial statements.
- The "Language Code" field is now mandatory while the „short name“ field changed to optional in the "Currency indicator" export function for masterfiles

5.6 IDL XIslink 22.0 Preview for customers using IDL Connector in version 2019.1

For customers still working with the now unsupported IDL Connector in version 2019.1, we offer a hotfix that allows you to test the further development of IDL XIslink from version 2022.0 in a 2019.1 H environment. This allows you to evaluate the advanced development of IDL XIslink in your familiar environment. In particular, this includes the new improvements regarding stability of the IDL XIslink add-in in Excel, client-side performance, reliability of updates and handling of password-protected workbooks.

Please note that the server-side improvements such as the performance enhancements due to a new communication protocol between the Excel Add-In and the server are not included and will only be available after an update to a current version. An update is recommended.

Please contact us if you need assistance migrating from IDL Connector to IDL XIslink or would like to try a test installation of Hotfix 2019.1 H 15 with the updated IDL XIslink. Our technical support will be happy to assist you.

Please note that the IDL Connector will be delivered for the last time in this release. As of the next release, the IDL Connector will no longer be included in the installation package.

6 IDL Smart Connectivity for SAP

6.1 IDL.Integrator.SSIS.exe

6.1.1 64 Bit IDL.Integrator.SSIS.exe

With a former Fixpack for 2022.0 the file Idl.Integrator.SSIS.exe has been released accidentally without 64 Bit support.

6.2 Deployment

6.2.1 Deserialisation error using Visual Studio / SQL Server 2019

Running the deployed content in Visual Studio 2019 with SQL Server 2019 DLLs resulted in an error in certain constellations.